

DONA ANA COUNTY BUILDING SERVICES DIVISION

845 N. MOTEL BLVD, RM #150, LAS CRUCES, NM 88007

Phone (575) 647-7350 Fax (575) 525-6131

RESIDENTIAL

WINDOW REPLACEMENT PERMIT REQUIREMENTS

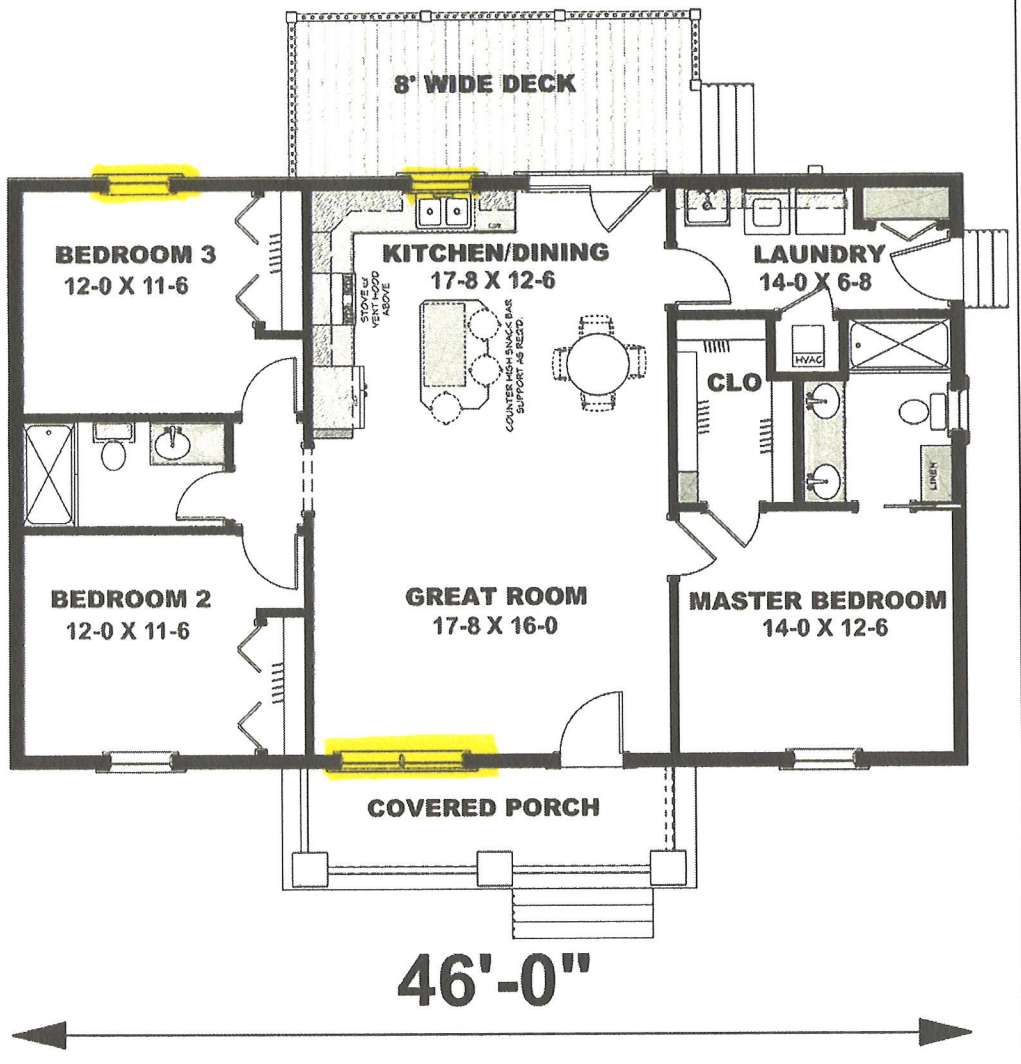
Current Codes: 2015 IRC; 2015 NMRBC; 2009 ENERGY CONSERVATION CODE;
2015 UNIFORM PLUMBING CODE; 2015 NEW MEXICO PLUMBING CODE; 2012 SWIMMING POOL, SPA, HOT TUB CODE; 2015 UNIFORM
MECHANICAL CODE; 2015 NEW MEXICO MECHANICAL CODE; 2012 NEW MEXICO SOLAR ENERGY CODE;
2017 NEC; 2017 NEW MEXICO ELECTRICAL CODE

Incomplete applications are not accepted. 25% of permit fee required at time of application.

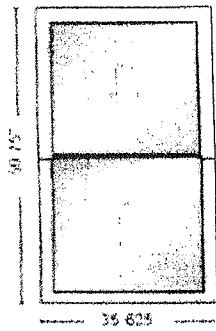
1. **Residential:** Site Plan drawing showing exact location of Window change out and dimensions.
(See sample floor plan attached)
2. **Window Specifications:** (See sample attached)
3. **Recorded Proof of Ownership and Legal access with legal description of property**
(Warranty Deed or Real Estate Contract) Copy can be obtained at County Clerk's – Room #200

**Homeowner permits require completion of "Instructions for Permit" and "Responsibilities and Liabilities Acknowledgement"
Forms can be found at our website online.*

42'-6"

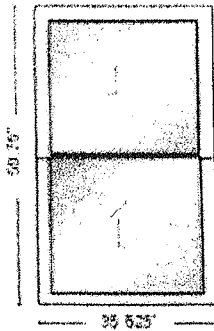


46'-0"



3A01-New 4000 Series Double Hung 35 5/8 x 59 3/4
 Frame Width = 35.625, Frame Height = 59.75, Sash Split =
 Even
 Operation / Venting = Double Hung
 Frame Option = Standard Block Frame, Composite
 Reinforcement
 Frame Color = Almond, Exterior Finish = No Exterior Finish
 SolarZone SunShield, Double Strength, Glass Breakage
 Warranty
 Standard Screen
 U-Factor = 0.29, CR = 58, SHGC = 0.14, VT = 0.29, CPD =
 ASO-A-89-69809-00001
 Header Expander, Foam Wrap, Net Overall

Comment / Room:	Weight
	14.8



3A01-New 4000 Series Double Hung 35 5/8 x 59 3/4
 Frame Width = 35.625, Frame Height = 59.75, Sash Split =
 Even
 Operation / Venting = Double Hung
 Frame Option = Standard Block Frame, Composite
 Reinforcement
 Frame Color = Almond, Exterior Finish = No Exterior Finish
 SolarZone SunShield, Double Strength, Glass Breakage
 Warranty
 Standard Screen
 U-Factor = 0.29, CR = 58, SHGC = 0.14, VT = 0.29, CPD =
 ASO-A-89-69809-00001
 Header Expander, Foam Wrap, Net Overall

Comment / Room:	Weight
LINE 2	14.8