



Dona Ana County, New Mexico Community Resource Center Uses and Activities

Name: La Mesa
Location: 744 San Jose, La Mesa, NM 88044

Date: 12/07/18

Parcel Size: 4.2 Acres **Build Size:** 2700 sf **Occupancy:** 180



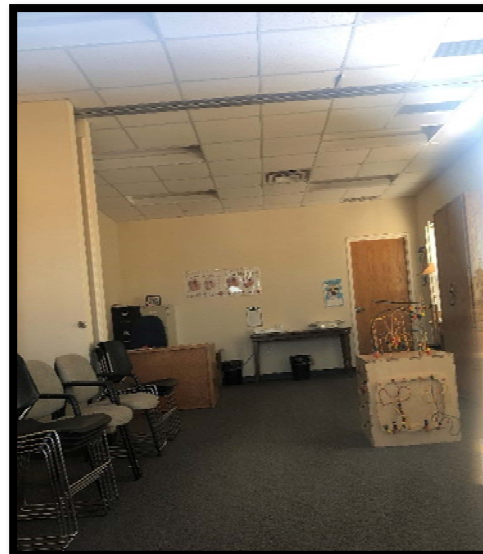
Aerial Photo



Floor Plan



Photo



Photo



Garza & Associates, LLC



Dona Ana County, New Mexico Community Resource Center Uses and Activities

Name: La Mesa
Location: 744 San Jose, La Mesa, NM 88044

Date: 12/07/18

General Conditions

Item	Good	Fair	Poor	Comment
General Facility	X			Modern clean facility
Accessible / ADA	X			Paved Hard Surface
Parking	X			Paved, Striped, Lighted
Visibility			X	No directional signage or marquee
Kitchen Stove	X			Residential
Kitchen Refrigerator	X			Residential
Kitchen Dish Washer	X			Residential
Custodial Services	X			Contracted

Programming

Dona Ana County Programs			Frequency / Schedule / Quantity		
H&HS Programs / Training			Exercise, Dance/Yoga, Belly Dancing		
Local Users			WIC once per month, coffee club soon		
Average DAC HHS <i>Monthly</i> Users			Youth	Adult	
			0	7	
Average Monthly Activities					
Community Meetings	Health Behaviors	Clinical Care	Social and Economic Factors	Physical Environment	Total
No Data	0	0	0	0	0

(Source: HHS CRC Final Data Report FY 18)

Related Operational Issues

Optimal use(s) for this facility	Community Center / Special Events
Are there offices at this location	Yes, several
Are there FTE's assigned to this facility	None
Security System or Security Personnel	None
Contracts, Leases, or Permits for Use	None



Garza & Associates, LLC



Dona Ana County, New Mexico Community Resource Center Uses and Activities

Name: La Mesa
Location: 744 San Jose, La Mesa, NM 88044

Date: 12/07/18

Recommended Use(s) and Comments:

1. Facility has small offices that are seldom used, may consider lease space for not-for-profit agencies to provide outreach services.
2. Facility is greatly under-utilized.
3. DAC owns over 3.5 acres of vacant land adjacent to this center.
4. SCSWA recycle center on site.



Garza & Associates, LLC