



Dona Ana County, New Mexico Community Resource Center Uses and Activities

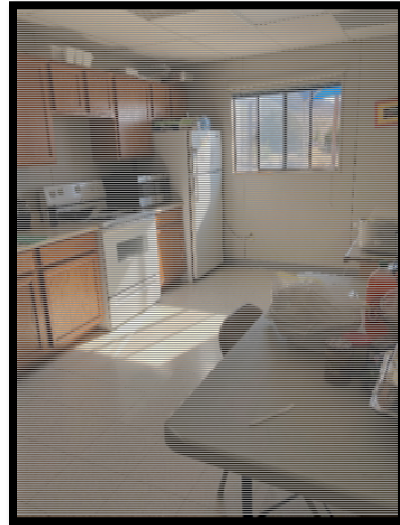
Name: Organ
Location: 5580 Second Street, Organ, NM 88052

Date: 12/07/18

Parcel Size: 2.25 Acres **Build Size:** 2,100 sf **Occupancy:** 140



Aerial Photo



Photo



Photo



Garza & Associates, LLC



Dona Ana County, New Mexico Community Resource Center Uses and Activities

Name: Organ
Location: 5580 Second Street, Organ, NM 88052

Date: 12/07/18

General Conditions

| Item | Good | Fair | Poor | Comment |
|----------------------|------|------|------|-------------------------------------|
| General Facility | | X | | |
| Accessible / ADA | | X | | |
| Parking | | X | | Limited, Not Improved or marked |
| Visibility | | | X | No directional signage or site sign |
| Kitchen Stove | X | | | Residential |
| Kitchen Refrigerator | X | | | Residential |
| Kitchen Dish Washer | X | | | Residential |
| Equipment | X | | | Residential |

Programming

| Dona Ana County Programs | | | | Frequency / Schedule / Quantity | |
|--------------------------------------|------------------|---------------|-----------------------------|---|-------|
| Veterans Weekly Coffee | | | | Mondays | |
| H&HS Programs / Training | | | | T &Th Walking / Exercise class / BB Court | |
| Local Users | | | | Porcelain Painting Wednesdays | |
| Average DAC HHS <i>Monthly</i> Users | | | | Youth | Adult |
| | | | | 50 | 121 |
| Average Monthly Activities | | | | | |
| Community Meetings | Health Behaviors | Clinical Care | Social and Economic Factors | Physical Environment | Total |
| 1 | 12 | 0 | 29 | 0 | 41 |

(Source: HHS CRC Final Data Report FY 18)

Related Operational Issues

| | |
|---|--|
| Optimal use(s) for this facility | Gradual redirected services to Butterfield |
| Are there offices at this location | Yes, One at Entry |
| Are there FTE's assigned to this facility | Yes, One FTE staff on site |
| Security System or Security Personnel | None |
| Contracts, Leases, or Permits for Use | None |



Garza & Associates, LLC



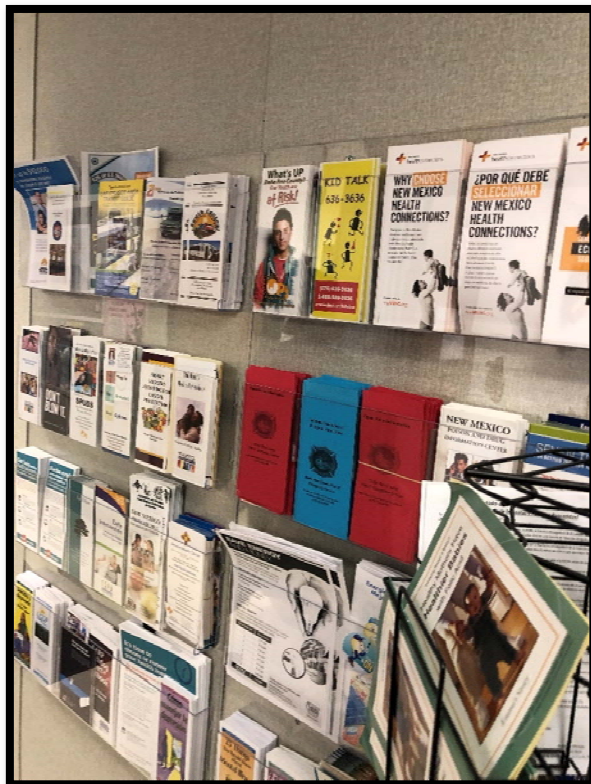
Dona Ana County, New Mexico Community Resource Center Uses and Activities

Name: Organ
Location: 5580 Second Street, Organ, NM 88052

Date: 12/07/18

Recommended Use(s) and Comments:

1. The bi-weekly walking (quarter mile sidewalk on property perimeter) and related exercise classes make this center one of the higher used centers from a health program perspective.
2. If programs at this location were merged with Butterfield (3.6 miles away), the park and walking trail can continue to be used for exercise programs.
3. Limited private use – Meeting room has a limited capacity.
4. Furnished play room for pre-k use during classes / training.
5. With exception of weekly veterans' coffee, there are no other regular community uses/meetings at this center.
6. Community Resource Center – brochures, documents, library exchange.



Garza & Associates, LLC