



Dona Ana County, New Mexico Community Resource Center Uses and Activities

Name: Butterfield
Location: Isaacs Ave at Berry Patch Ln

Date: 12/07/18

Parcel Size: 643 Acres
BLM lease **Build Size:** 3015 sf **Occupancy:** 201



Aerial Photo



Photo



Photo



Garza & Associates, LLC



Dona Ana County, New Mexico Community Resource Center Uses and Activities

Name: Butterfield
Location: Isaacs Ave at Berry Patch Ln

Date: 12/07/18

General Conditions

Item	Good	Fair	Poor	Comment
General Facility	X			Modern clean facility
Accessible / ADA	X			Paved Hard Surface
Parking	X			Paved, Striped, Lighted
Visibility			X	No directional signage or marquee
Kitchen Stove	X			Residential
Kitchen Refrigerator	X			Residential
Kitchen Dish Washer	X			Residential

Programming

Dona Ana County Programs			Frequency / Schedule / Quantity		
H&HS Programs / Training			Nuestra Vida, CPR, food distribution		
Local Users			Coffee clubs, arts and crafts, sewing, Music		
			Zumba classes 3 nights/Wk; martial arts		
Average DAC HHS <i>Monthly</i> Users			Youth	Adult	
			113	369	
Average Monthly Activities					
Community Meetings	Health Behaviors	Clinical Care	Social and Economic Factors	Physical Environment	Total
1	15	0	22	0	38

(Source: HHS CRC Final Data Report FY 18)

Related Operational Issues

Optimal use(s) for this facility	Community Center / Special Events
Are there offices at this location	Yes, one
Are there FTE's assigned to this facility	Yes, One FTE staff
Security System or Security Personnel	None
Contracts, Leases, or Permits for Use	None



Garza & Associates, LLC



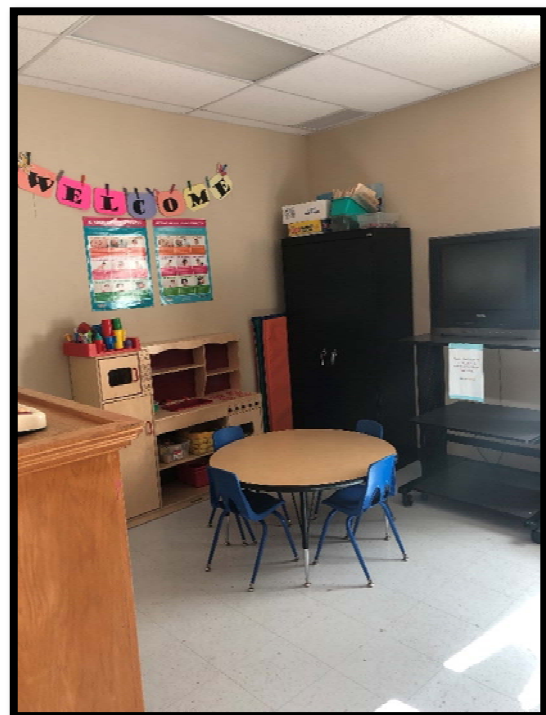
Dona Ana County, New Mexico Community Resource Center Uses and Activities

Name: Butterfield
Location: Isaacs Ave at Berry Patch Ln

Date: 12/07/18

Recommended Use(s) and Comments:

1. Fourth most attended CRC in the County.
2. Sewing and quilting are popular activities.
3. This Center also provides Arts and Crafts, Sewing, Martial Arts, Bingo/Loteria, CPR/first aid classes and coffee club events. A review of these uses to ensure compliance with facility use policies is recommended.
4. Child care room for adults attending programs and activities is available.
5. Adjacent County Park (Jose Reyna Park) recreational uses include: baseball field with covered spectator areas, horseshoe pits, playground, covered pavilion



Garza & Associates, LLC